

## Donor Recognition

Each donor will be recognized on a permanent display inside the building, the Wall of Agriculture Hall Supporters

## Funding

It is our goal to fund this building with donations from agriculture families and businesses.

## Funding Goal

We would like to obtain donors from throughout Henry County and the surrounding area, but we will accept any size donation. Over \$275,000 will be needed.

## Go Fund Me

Make your donation online!  
[www.gofundme.com/HenryCoAgHall](http://www.gofundme.com/HenryCoAgHall)

## Commodity Sizes for \$1000 Donation

Corn—300 bu  
Soybeans—80 bu  
Steers—1 head

## Project Committee Contact Members:

John Poulson  
419-445-9303  
[jpoulson@pettisvilleschools.org](mailto:jpoulson@pettisvilleschools.org)

Wayne Michaelis  
419-598-8339  
[michaelis@bright.net](mailto:michaelis@bright.net)

Brandon & Abby Readshaw  
419-762-5266  
[areadshaw@fourcounty.net](mailto:areadshaw@fourcounty.net)

Cinda, Fair Secretary  
419-592-9096  
[secretary@henrycountyfair.org](mailto:secretary@henrycountyfair.org)

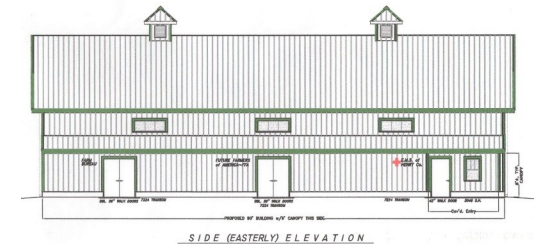
Marilyn Hershberger  
Finance Committee Member  
419-599-5110

## Facts about the Ag Hall

- Serves over 600 FFA members from Four County Career Center, Holgate, Liberty Center, and Patrick Henry
- Over 575 produce and vegetable entries
- Over 140 beer and wine entries



Will you  
invest in our  
future?

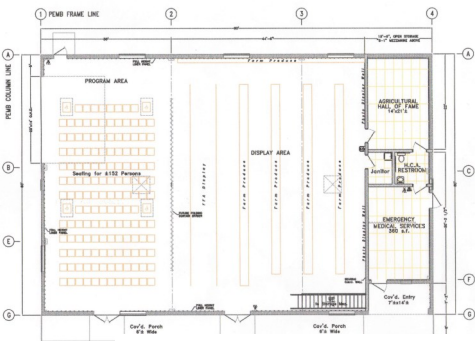


New Henry County  
Agriculture Hall

## Purpose of the Agriculture Hall

The new Ag Hall in Henry County would house the following departments:

- A larger, more private EMS station with private restroom
- 560 sq. ft. meeting space
- FFA Projects
- Farm products and youth vegetable displays
- Homemade lagers, ales, and wines judging and display
- Henry County Farm Bureau (replacing the tent)
- Permanent Agriculture Hall of Fame display
- Henry County Fair History



**Building Floor Plan**



## Building Details

Style: Similar to the Small Animal Building—tall, metal framing, concrete walls (to allow for additional winter storage revenue). The new building will go over the old footprint and extend toward the south drive.

Size: Approximately 5,400 ft<sup>2</sup>—2,000 more than existing building

Completion: Fair 2016

## Pledge Card

Name(s) \_\_\_\_\_

Name(s) for Recognition Wall \_\_\_\_\_

Address \_\_\_\_\_

City/State/ZIP \_\_\_\_\_

Phone \_\_\_\_\_

Email \_\_\_\_\_

Donation Amount \_\_\_\_\_

Multi-year pledge? Please comment:

Would you like a personal visit to discuss the project? Please contact a project committee member or check here:

Please make checks out to **Henry County Agricultural Society**. The Society is a 501c(3) organization and all donations are tax-deductible. Remit to the address listed below.

## Henry County Fair

Henry County Fair  
821 S. Perry St., PO Box 387  
Napoleon, OH 43545

Phone: 419-592-9096

Fax: 419-592-9986

E-mail: secretary@henrycountyfair.org